

Wildfire Hazard Reduction Program

Are you concerned about wildfire impacting your property? Fuel breaks can be beneficial in reducing your risk. Lightning, equipment, and recreation are the cause of an average of 7 wildfires a year in Lincoln County. Partner with the Lincoln County Conservation District, Bureau of Land Management, Department of Fish and Wildlife, local Fire Districts, and the Lincoln County Community Wildfire Protection Plan Committee to better protect your property and the wildlife that surrounds you.



What is the program?

The District can work with you to create fuel breaks along the roadways on your property in the sage-grouse habitat area in Lincoln County. If you own property in the project area (shown below) you are eligible to participate. This grant is 100% fully funded by a partnership with the Bureau of Land Management.

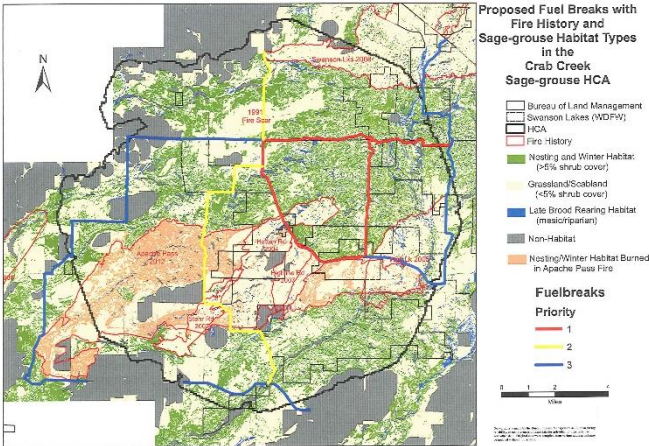
Basic Information

- Implement a complete fuel break of 150 feet width across roadway
- Project completed in two steps: shrub removal and restoration seeding

Conservation Benefits

Better protecting your home. Not only are you reducing your fire potential to your home, you are better protecting your family and loved ones.

Helping local firefighters. If wildfire were to break out on your property, having a wider roadway gives firefighters safer access to fight the fire and a better chance of putting it out.



Lincoln County Conservation District

Lincoln County Wildfire Community Protection Plan Committee
Fire Districts 3,5,6,7, and 8

Contact information:

Lea Shields
509.725.4181 ext. 116
lshields@conservewa.net

www.lincolncd.com